

New Normal in Hand Hygiene



**Sinks and soap are mostly
in bathrooms.**



**We leave the room, go
down the hall, find the
third door on the right, just
to wash hands.**

Putting handwashing within reach



In Schools

Let's put Hand Washing Facilities within reach

What's the problem?

Students can wash their hands much more frequently if sinks are conveniently located and are in the line of sight.

They can be reminded again and again, but without convenient facilities, they might not wash hands regularly; hence it would not become a habit; and unlikely that it will help save lives.

A huge proportion of schools have inadequate hand washing facilities. Today, most hand washing facilities are available only in the toilet.

Putting hand washing facilities where they're needed is difficult, in part because conventional piped sinks are expensive and require plumbing.

It is well documented that structural support, i.e. access to attractive, clean facilities are key to improving handwashing behavior in schools [1].

The new normal for hygiene: Students and Teachers can wash hands wherever needed



It's not enough to provide sinks and soap only in bathrooms.

Why? Because it's not enough to wash hands only after using the toilet.



The future of basic hand hygiene is washing in more places and at more times.

This requires a shift in facilities management - everywhere in schools

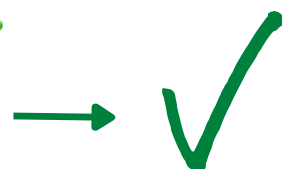
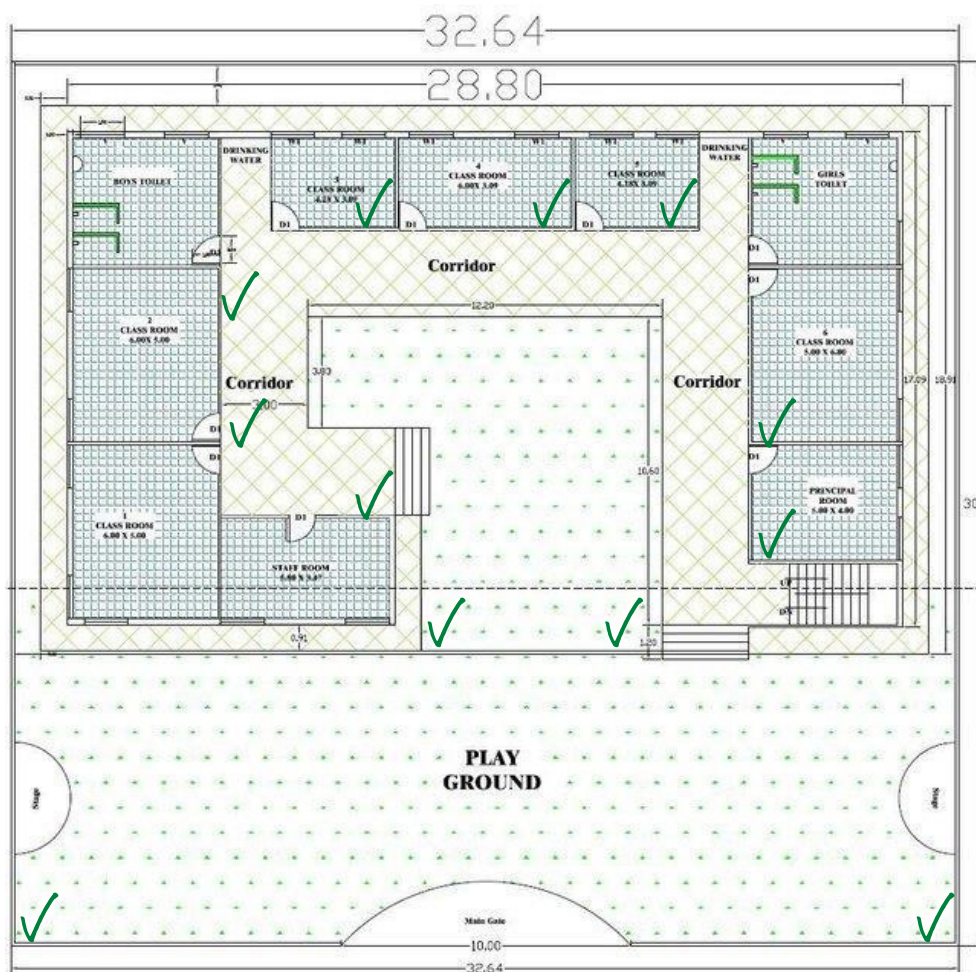


No more leaving the classroom, going down the hall, finding the third door on the right, just to wash hands.

Instead, **handwashing within reach.**

[1] Chittleborough, C. R., Nicholson, A. L., Basker, E., Bell, S., & Campbell, R. (2012). Factors influencing hand washing behaviour in primary schools: process evaluation within a randomized controlled trial. Health Education Research, 27(6), 1055–1068. <https://doi.org/10.1093/her/cys061>
- All images are from real settings.

School schematics with suggestions for locations to install portable hand washing stations for the new normal.



1 outside each classroom

1 each outside staff rooms and cabins

On the playgrounds as per no. of students.
That is 1 for every 25 students.

On the either sides of assembly rooms as per
no. of students. That is 1 for every 25 students.

2- 4 near the entrance of the school





In Hospitals

(Sub- Centre, PHC, CHC, Vaccination Centre, AH, DHH)

Let's put Hand Washing Facilities within reach

What's the problem?

Medical staff and patients can wash their hands much more frequently if sinks are conveniently located and are in the line of sight.

They can be reminded again and again, but without convenient facilities, they might not wash hands regularly; hence it would not become a habit; and unlikely that it will help save lives. In fact, if people have to walk out of their way to reach a hand washing facility, then they might not use it at all.

Nurses in Canada—already very well-trained in hand hygiene—are 10% less likely to wash hands for every meter they have to walk to reach a sink [1].

A huge proportion of healthcare facilities have inadequate hand washing facilities. Today, most hand washing facilities are available only in the toilet.

Putting hand washing facilities where they're needed is difficult, in part because conventional piped sinks are expensive and require plumbing.

The new normal for hygiene: Doctors and Nurses can wash hands wherever needed



It's not enough to provide sinks and soap only in bathrooms.

Why? Because it's not enough to wash hands only after using the toilet.



The future of basic hand hygiene is washing in more places and at more times.

This requires a shift in facilities management - everywhere in healthcare facilities

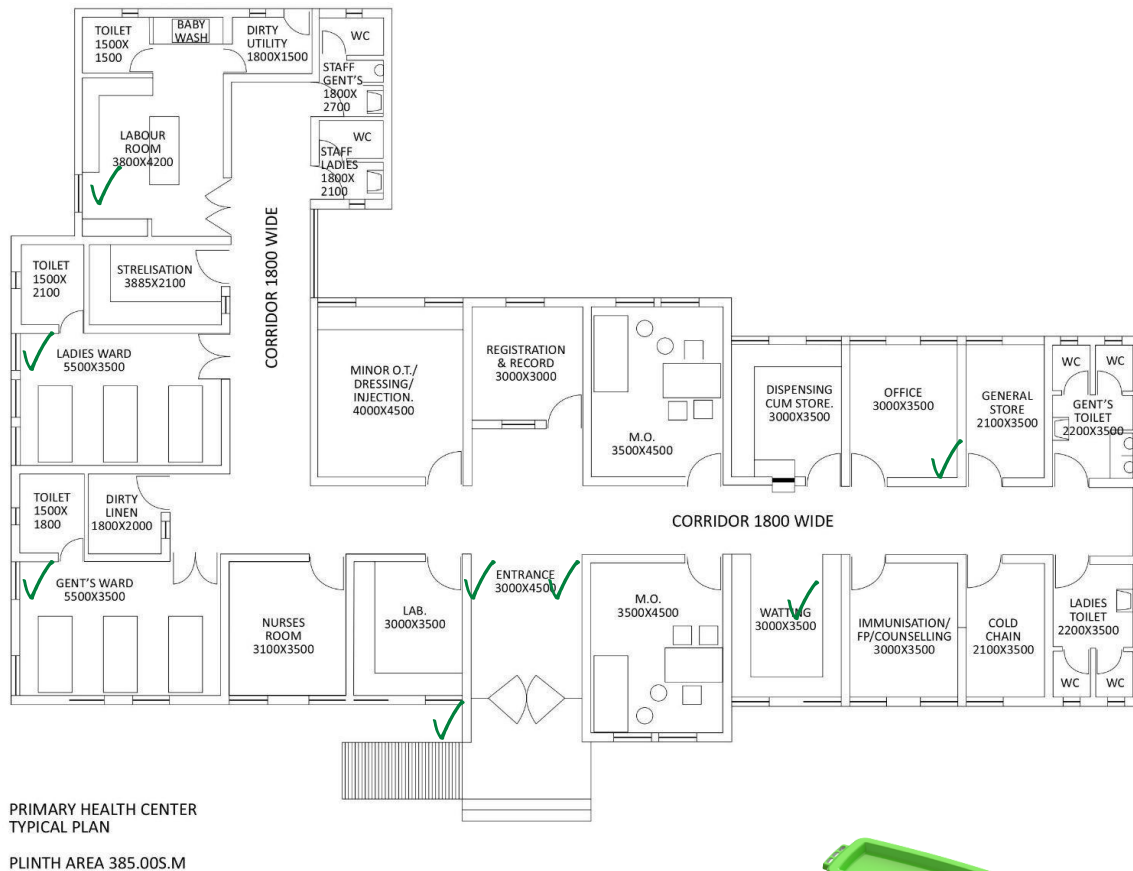


No more leaving the medical room, going down the hall, finding the third door on the right, just to wash hands.

Instead, **handwashing within reach.**

[1] Deyneko, A., Cordeiro, F., Berlin, L. et al. Impact of sink location on hand hygiene compliance after care of patients with *Clostridium difficile* infection: a cross-sectional study. BMC Infect Dis 16, 203 (2016). <https://doi.org/10.1186/s12879-016-1535-x>

Hospital schematics with suggestions for locations to install portable hand washing stations for the new normal.



1 near the reception
In the waiting rooms as per the no. of patients. 1 per 25 patients.
1 outside the doctor's cabins
2-4 near the entrance of the hospital
1 in the examination rooms
In the ward as per the no. of beds. 1 per 25 beds.





In Aanganwadi Centres

Let's put Hand Washing Facilities within reach

What's the problem?

Children can wash their hands much more frequently if sinks are conveniently located and are in the line of sight.

They can be reminded again and again, but without convenient facilities, they might not wash hands regularly; hence it would not become a habit; and unlikely that it will help save lives.

Happy Tap serves as a very strong nudge to wash hands, which can be habit forming in kids with institutions of WCD.

A huge proportion of AWCs and childcare institutions have inadequate hand washing facilities.

Today, most hand washing facilities are available only in the toilet.

Putting hand washing facilities where they're needed is difficult, in part because conventional piped sinks are expensive and require plumbing.

The new normal for hygiene: Children can wash hands wherever needed



It's not enough to provide sinks and soap only in bathrooms.

Why? Because it's not enough to wash hands only after using the toilet.



The future of basic hand hygiene is washing in more places and at more times.

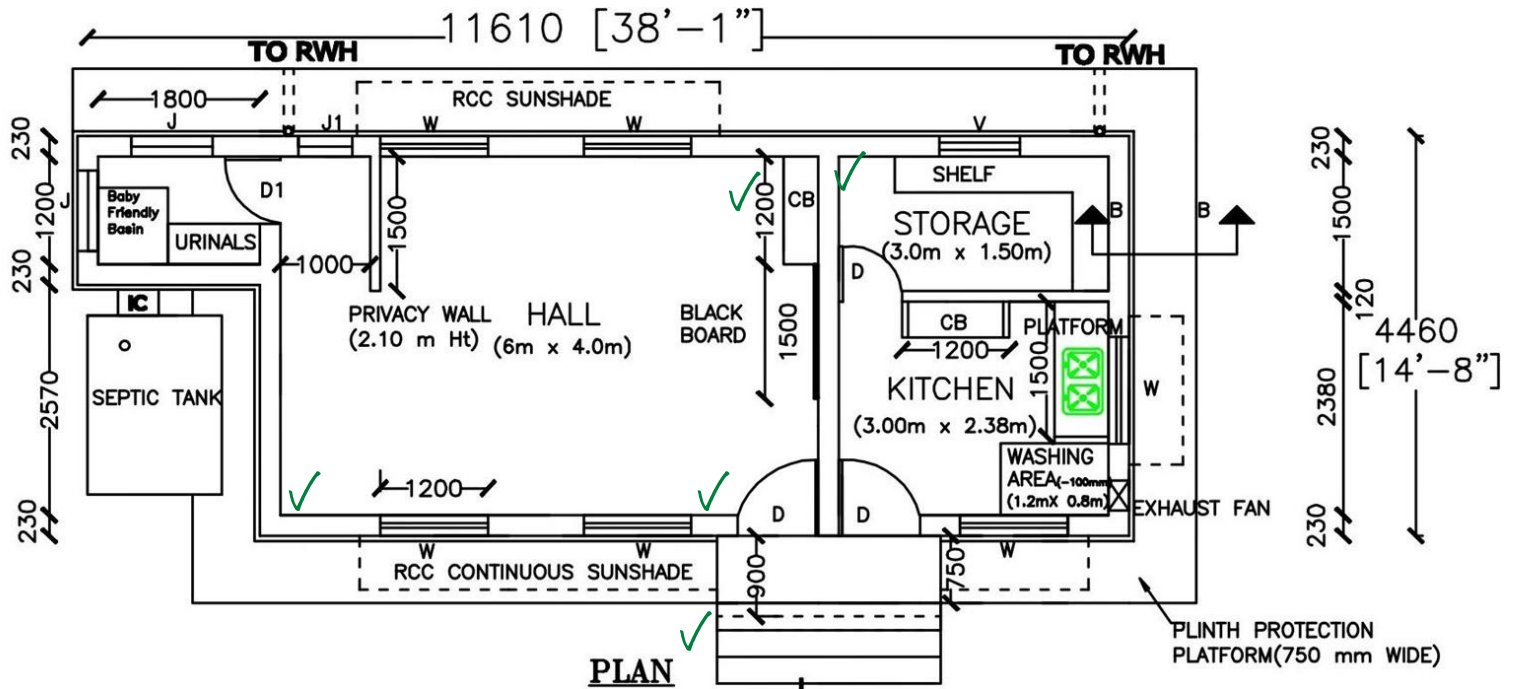
This requires a shift in facilities management - everywhere in Childcare settings



No more leaving the room, going down the hall, finding the third door on the right, just to wash hands.

Instead, **handwashing within reach.**

AWC schematics with suggestions for locations to install portable hand washing stations for the new normal.



1 Outside room
2-4 Near the entrance
In the common area as per the no. of children. 1 for every 20 children.
Inside eating hall as per the no. of children. 1 for every 20 children.
1 outside the staff room.



How do we put handwashing within reach now?

Modular, durable, & portable handwashing facilities are being implemented at scale, in a matter of weeks.

Next-generation sinks allow facilities managers to jump straight to the desired outcome:

Everyone washing hands when and where needed.



[2] COVID-19 Handwashing with Soap (HWWS) facilities: compendium of indicative layouts, designs and cost estimates. April 2020. <https://bit.ly/3xnoall>

Introducing HappyTaps: portable, modular next-generation sinks

Effective: Referenced by WHO/UNICEF as covid-19 compliant & child-friendly [3]

Easy to configure for distancing & nudging: Instant set-up and portability for deployment wherever handwashing is most needed.

Water-efficient: Low-flow tap & 15L tank allows for 50-60 uses per fill.

Durable: Food-grade material; built to last under tough usage conditions for 5 years. Conditional 1 year warranty.

Deploy at scale: mass-produced locally, ships rapidly to anywhere in India.

